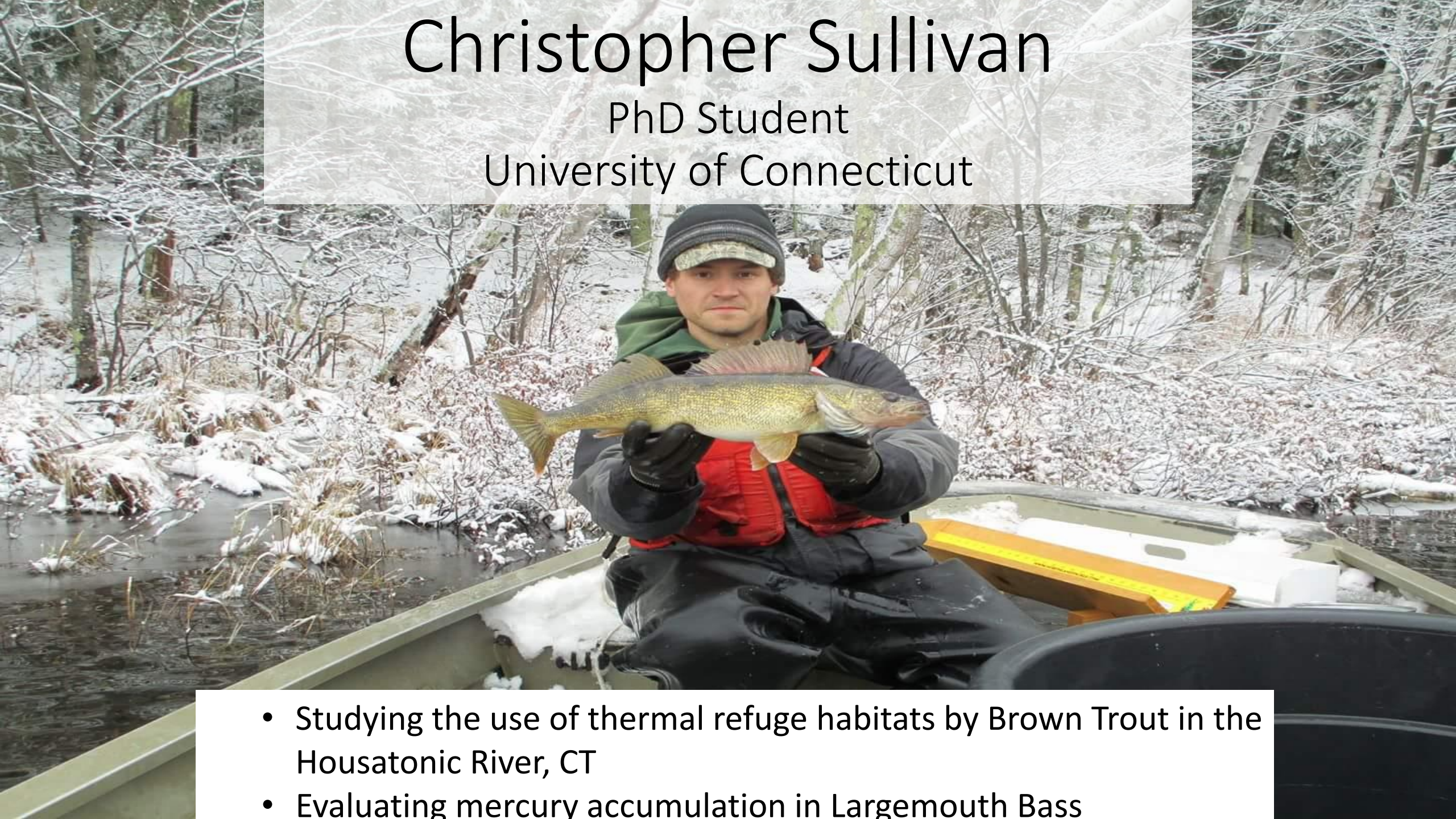


SNEC Travel Award Recipient

To present at the annual AFS meeting in August 2019

Christopher Sullivan

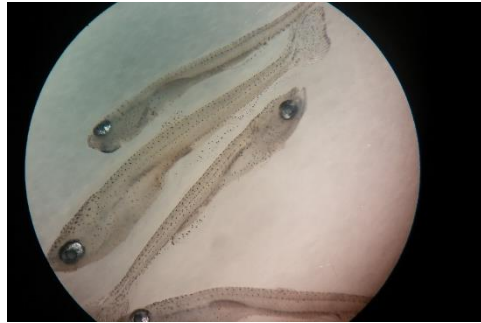
PhD Student
University of Connecticut



- Studying the use of thermal refuge habitats by Brown Trout in the Housatonic River, CT
- Evaluating mercury accumulation in Largemouth Bass

Education and Professional Background

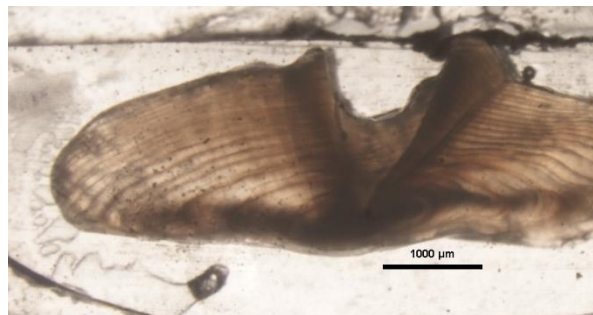
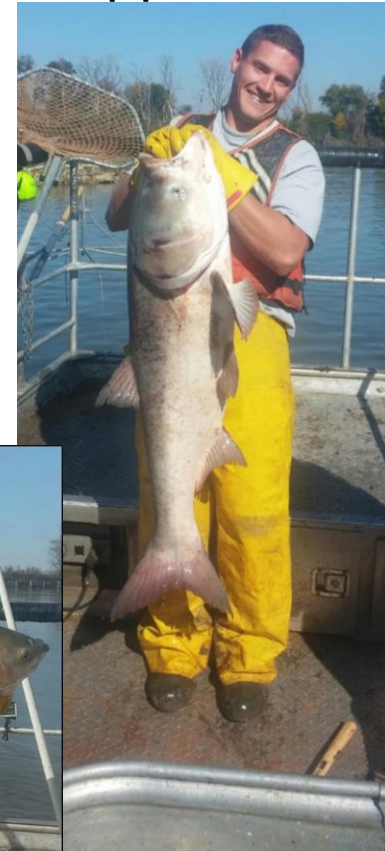
- BS from Purdue University (Fisheries and Forestry)
 - Worked Dr. Tomas Höök's lab researching larval Yellow Perch ecology in the Great Lakes and understanding both gear and analytical method influences on fish assemblage characterizations



- Naturalist Aide for Indiana DNR
 - Aided biologists with fish population and zooplankton sampling efforts

Education and Professional Background

- MS from Iowa State University
 - Evaluated population characteristics and dynamics of invasive carp populations across the upper Mississippi River watershed



Education and Professional Background

- Research Scientist at UW-Stevens Point
 - Evaluated whether extensive removal of centrarchid species in a Wisconsin lake could result in improved Walleye recruitment
 - Aided with studies tracking Lake Sturgeon, Musky, Lake Whitefish, and Walleye movements in Green Bay, WI

